

KIT NUMBER	
DBABU3001	

REF	DESCRIPTION	QTY
1	4000 T3 Slotted Rotors	2
2	Banjo Bolt	2
3	Copper Gasket	4
4	Brake Hose Kit	2
5	Caliper Bolt (M12-L65)	4
6	Spring Washer (TH.=3mm)	4
7	Caliper Assembly	2
8	Caliper Bleed Screw	4
9	Caliper Bracket Connecting Bolt (M14-TH1.5)	O.E.
10	Adjusting Washer (M14-TH. 0.5mm)	8
11	Washer (M14-TH. 2.5mm)	4
12	Pad Set	1
13	Tension Spring	2
14	Retainer	4
15	Retainer Fixed Bolt	4
16	Retainer Fixed Nut	4
17	Caliper Bracket	2

TIGHTENING TORQUES	
Ref#	Torque (N-M)
2	25 - 27
5	65 - 68
8	7
9	O.E.STD.
15,16	17

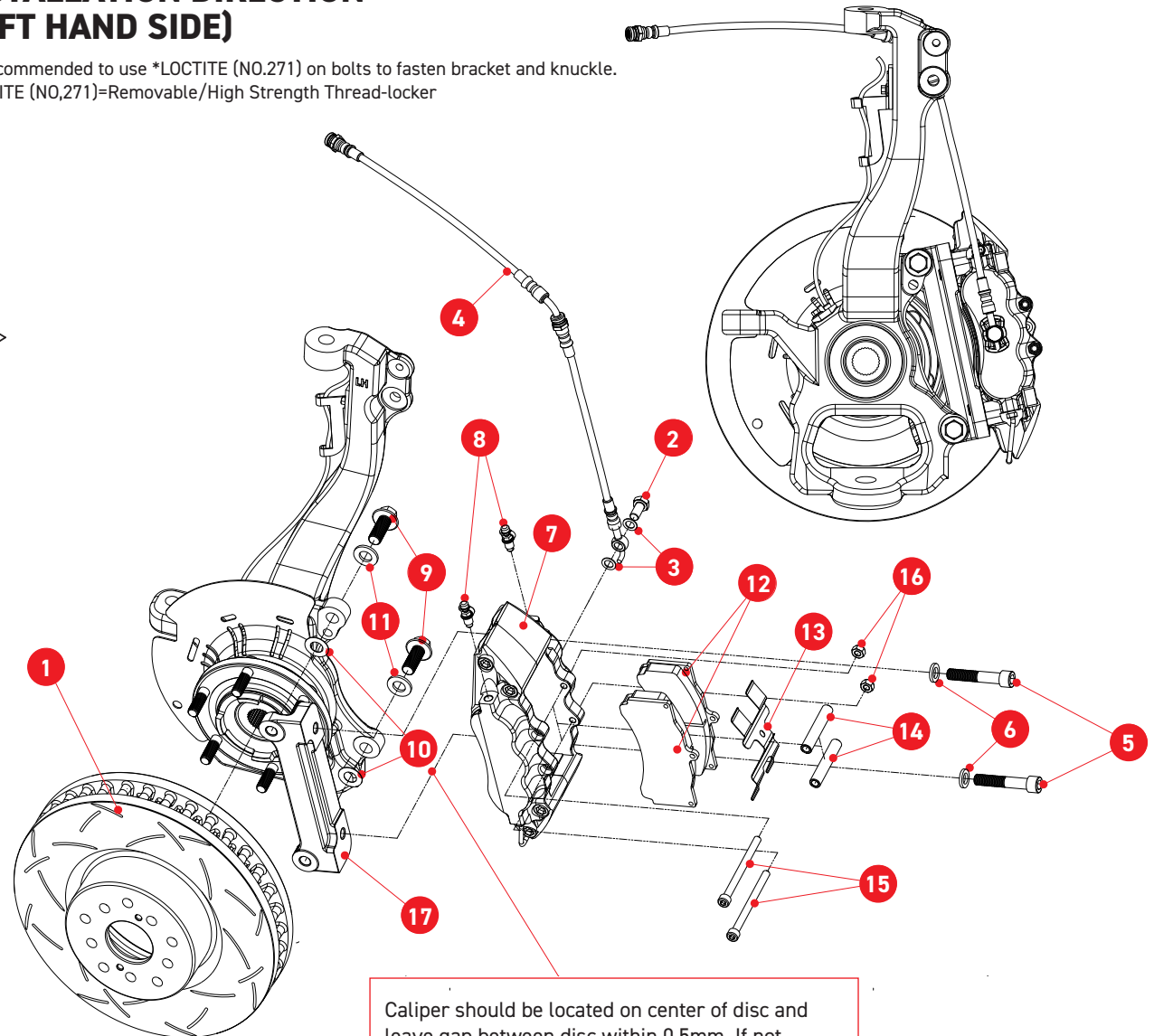
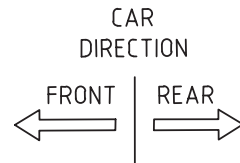
BRAKE ROTOR WEAR	
NEW	MIN
Thickness 32 mm	30mm

BRAKE PAD WEAR	
Thickness 16 mm	8mm

**FORD RANGER
PX & PXII 4WD
FRONT 6 POT
BRAKE KIT**

**INSTALLATION DIRECTION
(LEFT HAND SIDE)**

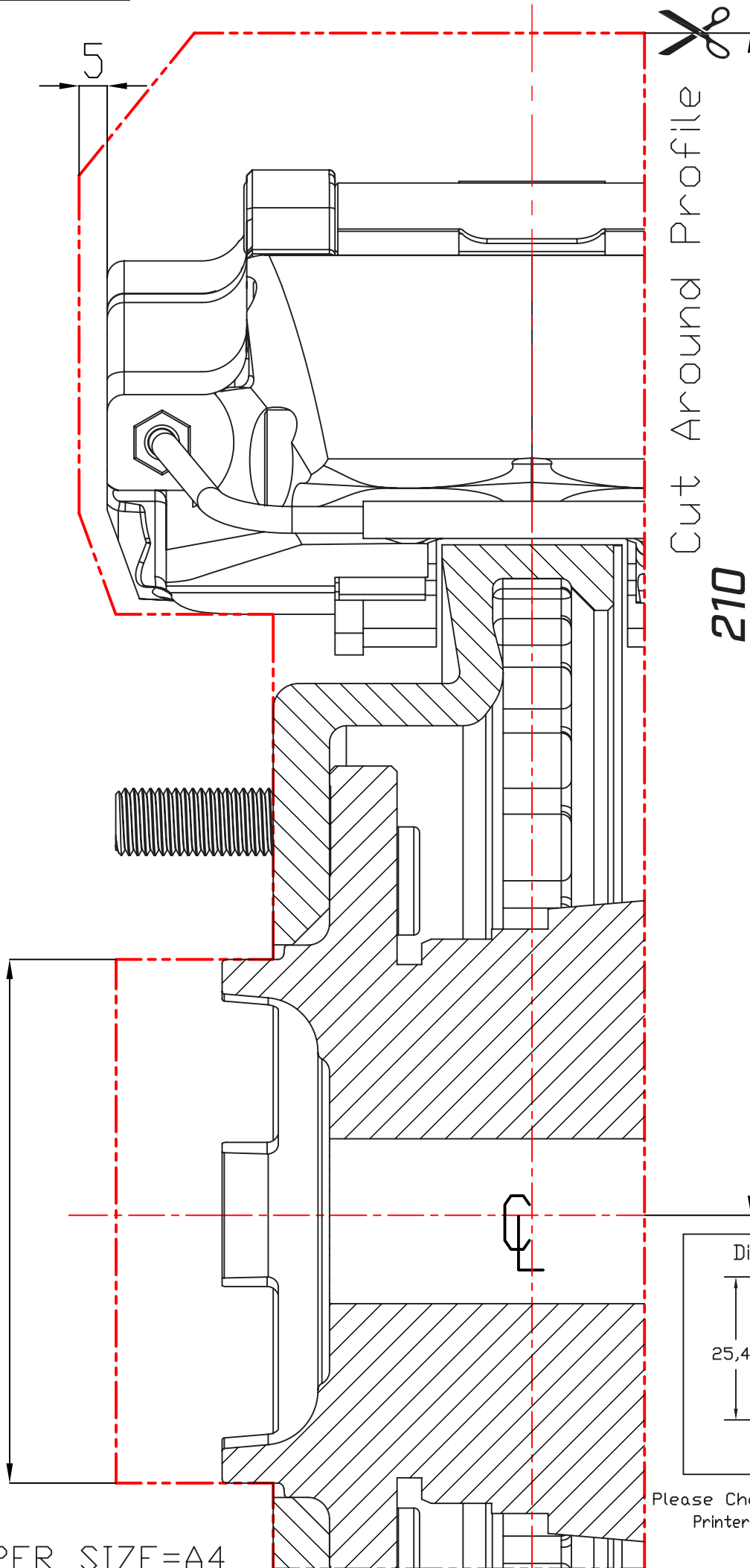
It's recommended to use *LOCTITE (NO.271) on bolts to fasten bracket and knuckle.
*LOCTITE (NO.271)=Removable/High Strength Thread-locker



Caliper should be located on center of disc and leave gap between disc within 0.5mm. If not adjusting caliper offset by 0.5 thickness washer.

93 (WHEEL SPIGOT)

PAPER SIZE=A4



Please Check Scale When Printed
Printer Page Scaling select [none]